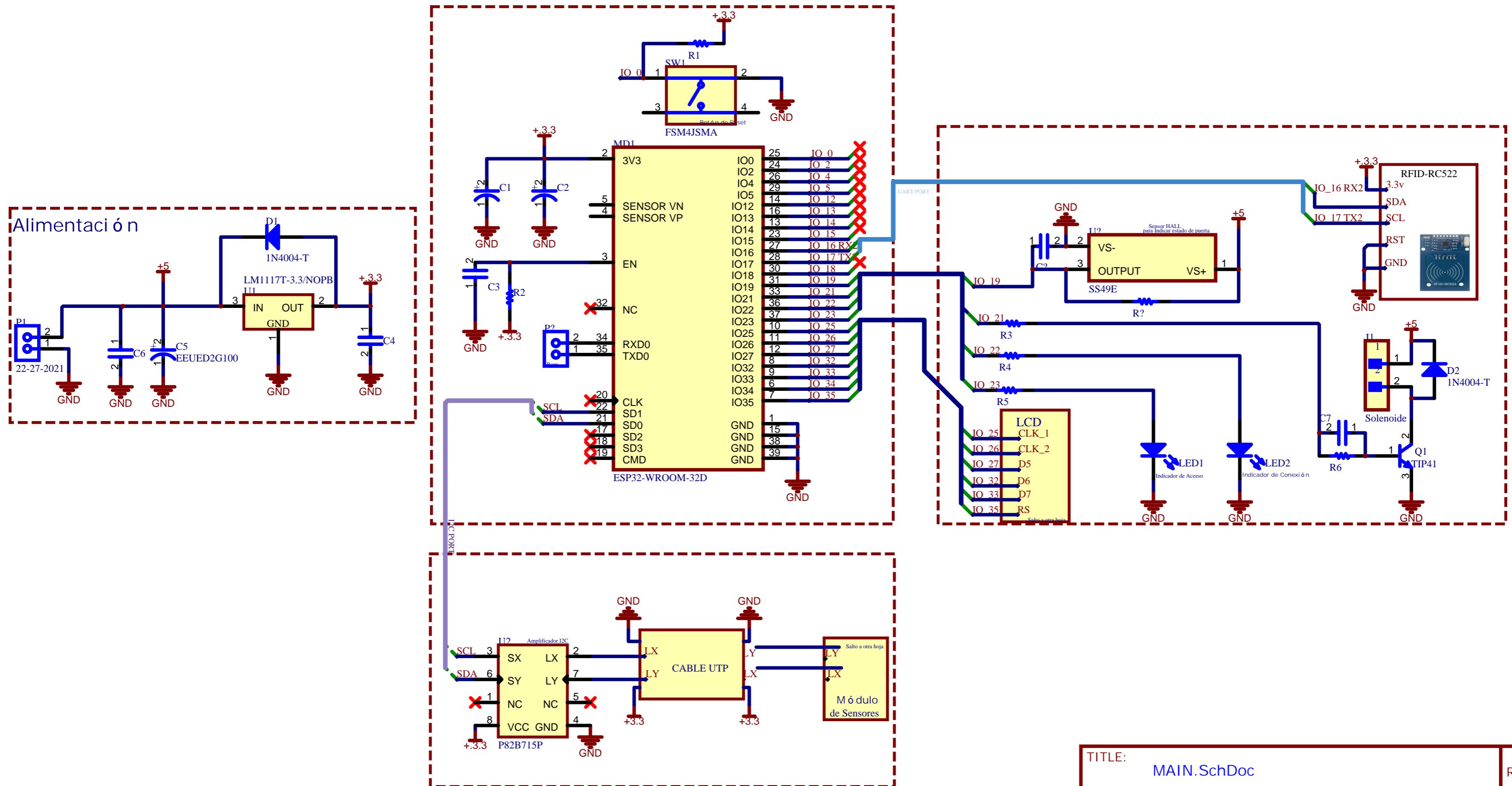
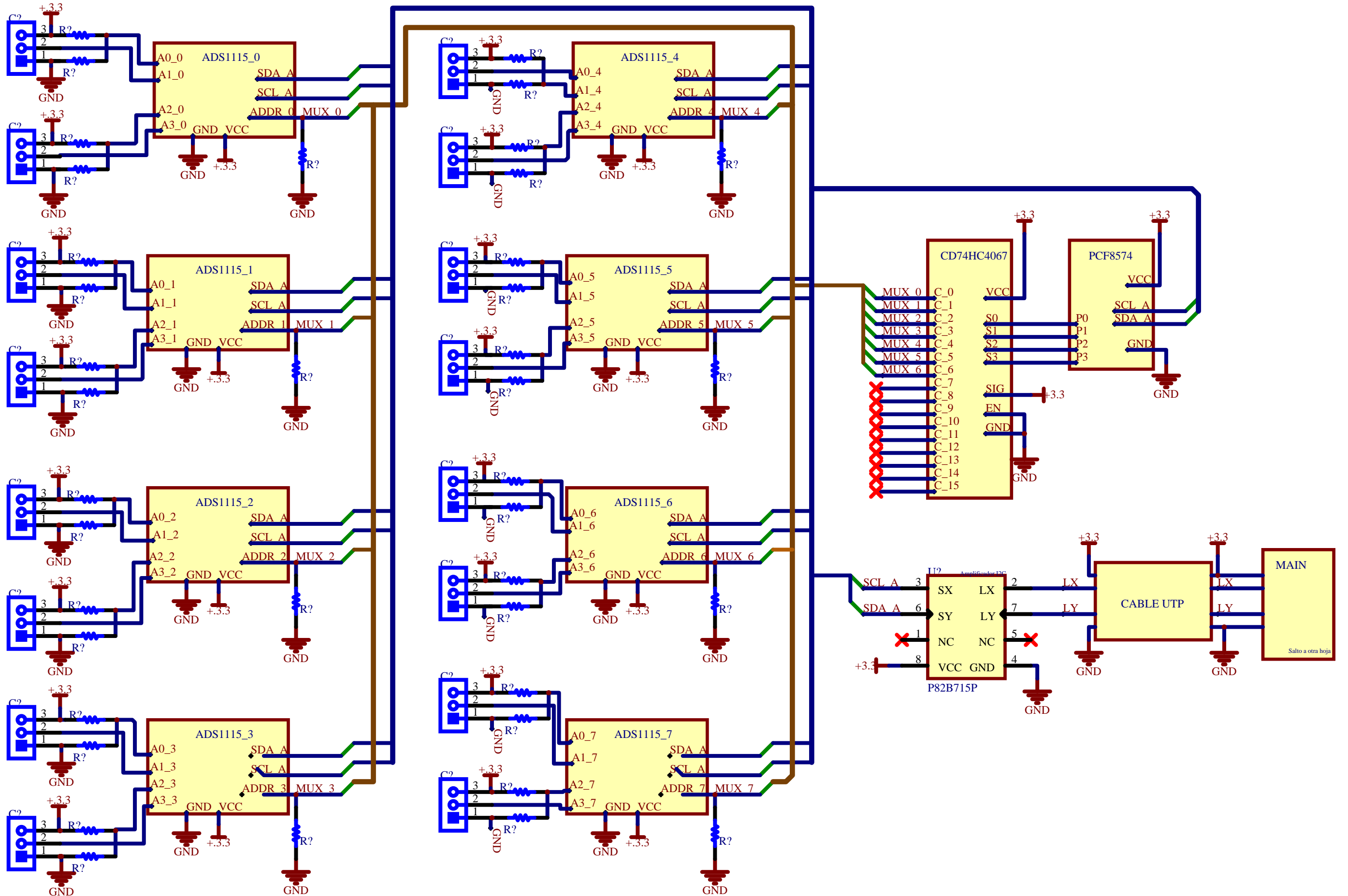


Sistema Identificador de Objetos por medio de Transductores de Presión para Despensa con cobro automático



Módulo de Sensores

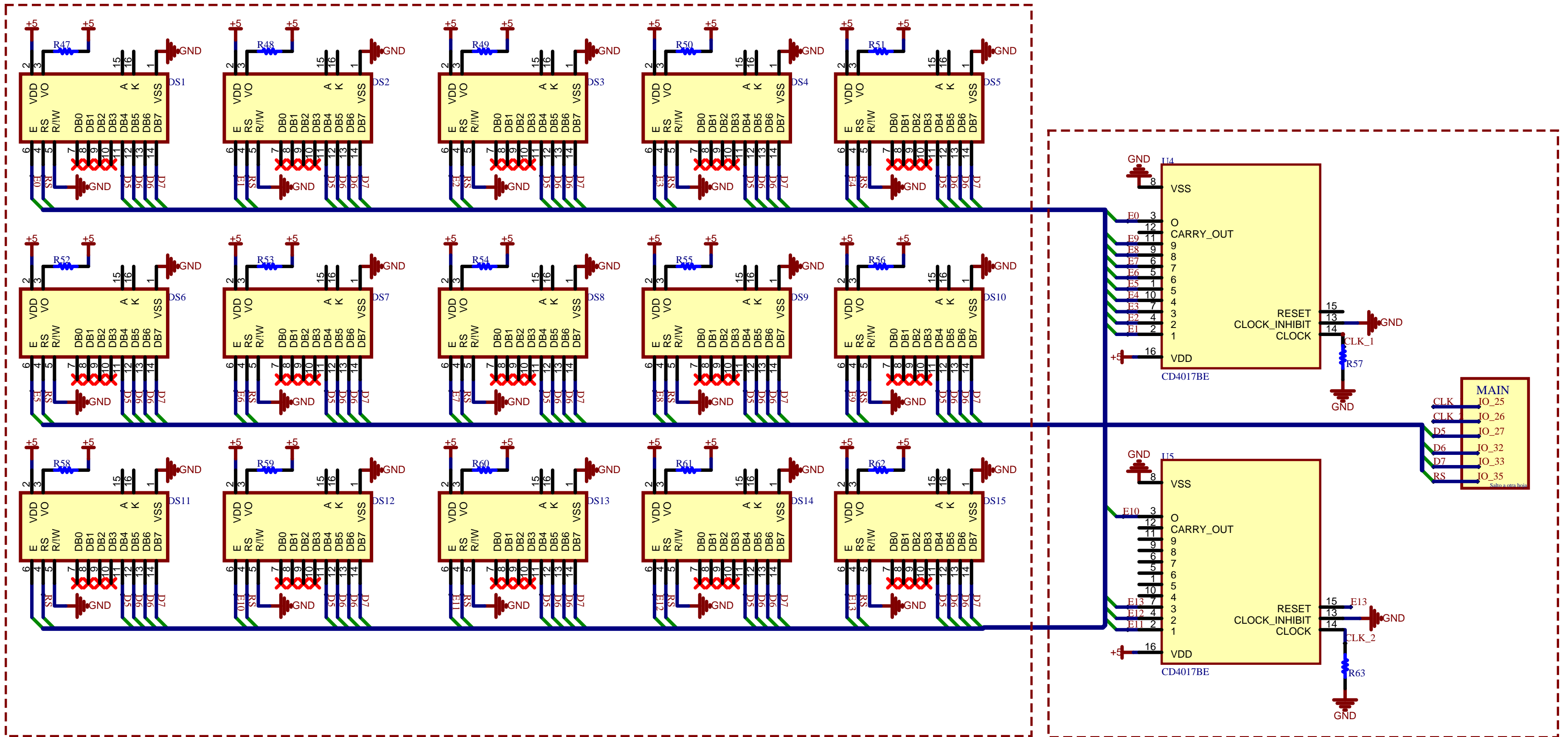


En este módulo se encuentran las partes concernientes a la tomade datos por parte de los sensores de presión que est án representados por la letra "S".
Se utilizan ADC para la conversión a digital y se env í a la informaci ón por I2C.

TITLE: Módulo de Sensores.SchDoc		REV: 1.0
Company: Universidad T écnol ógica de Santiago		Sheet: 2/3
Date: 2023-02-08	Drawn By: wade.elca	



Módulo LCD

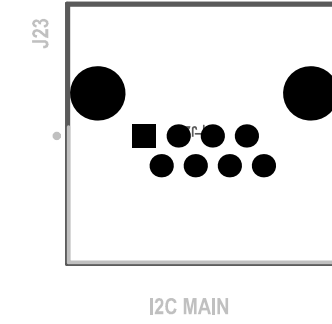
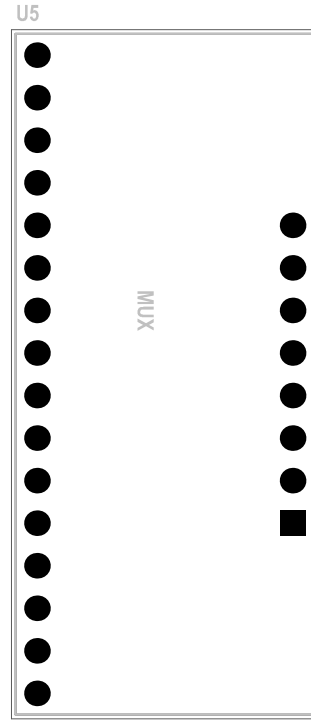
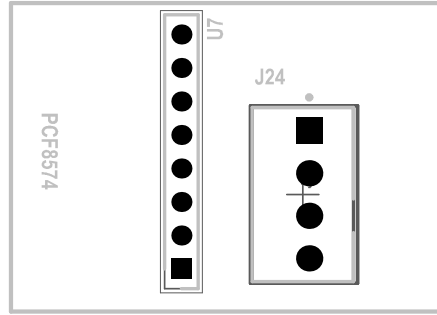
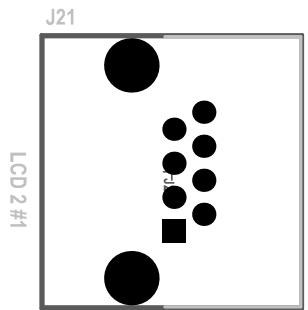
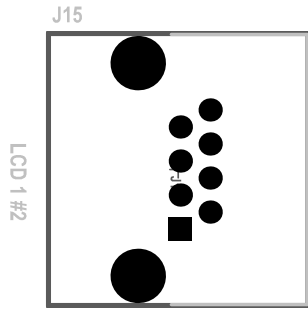
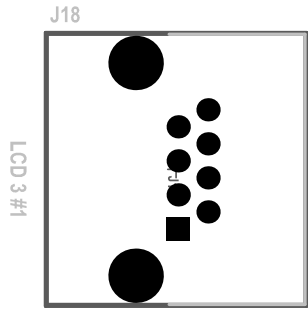
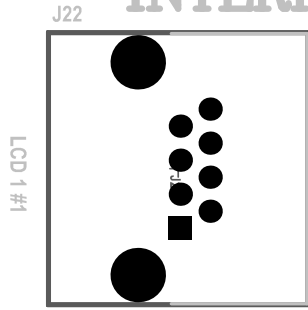


En este módulo se encuentran las partes concernientes a la visualización de datos por medio de las pantallas LCD. Las mismas son seleccionadas a través de contadores CD4017.

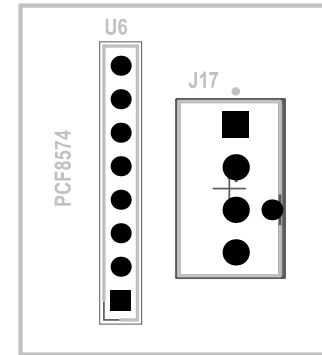
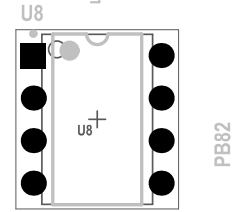
TITLE: Módulo 1LCD.SchDoc		REV: 1.0
Company: Your Company		Sheet: 3/3
Date: 2023-02-08	Drawn By: wade.elca	



Tarjeta INTERFAZ



SDA SCL LX LY



89.41

81.28



WADE

1171970

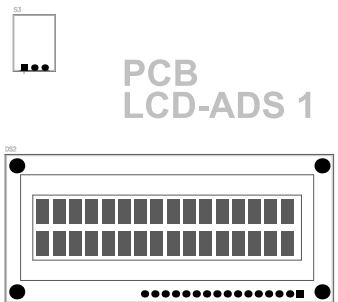
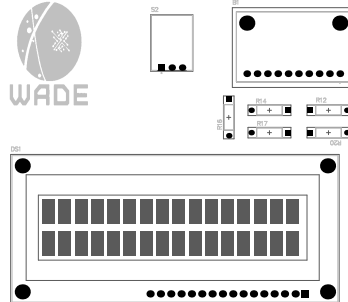


UNIVERSIDAD TECNOLÓGICA DE ENTLAVIA
SISTEMA CORPORATIVO
UTESA
SAPERE ET VIVERE

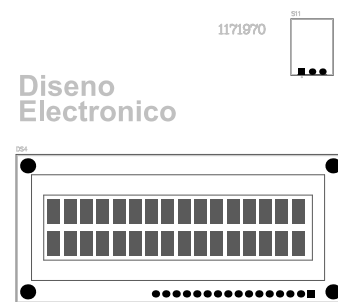
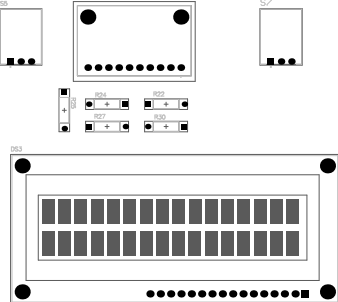
Diseno
Electronico



WADE

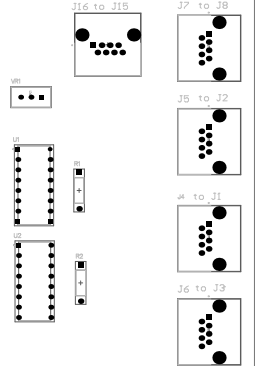
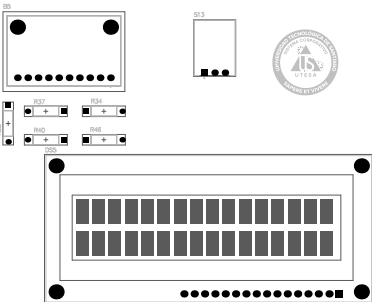


PCB
LCD-ADS 1



Diseno
Electronico

1171970

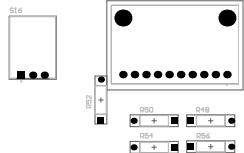


534.75

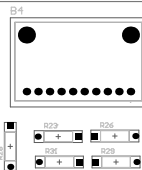
95.00



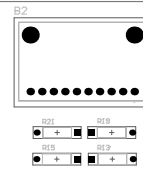
WADE



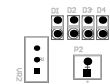
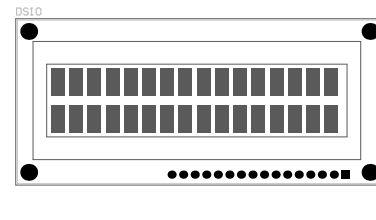
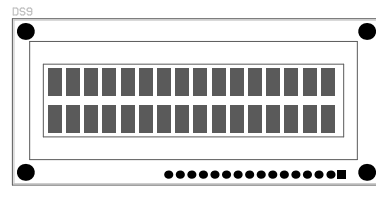
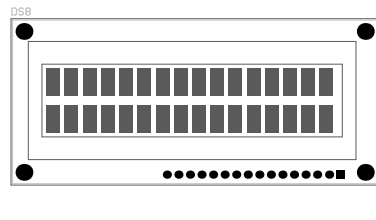
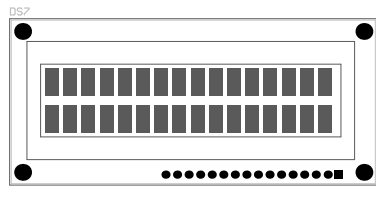
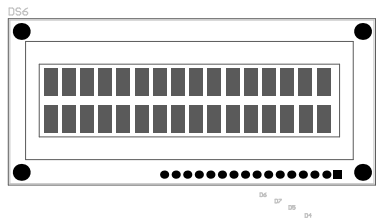
PCB
LCD-ADS 2



Diseno
Electronico



1171970



480,568 (mm)

94,615 (mm)

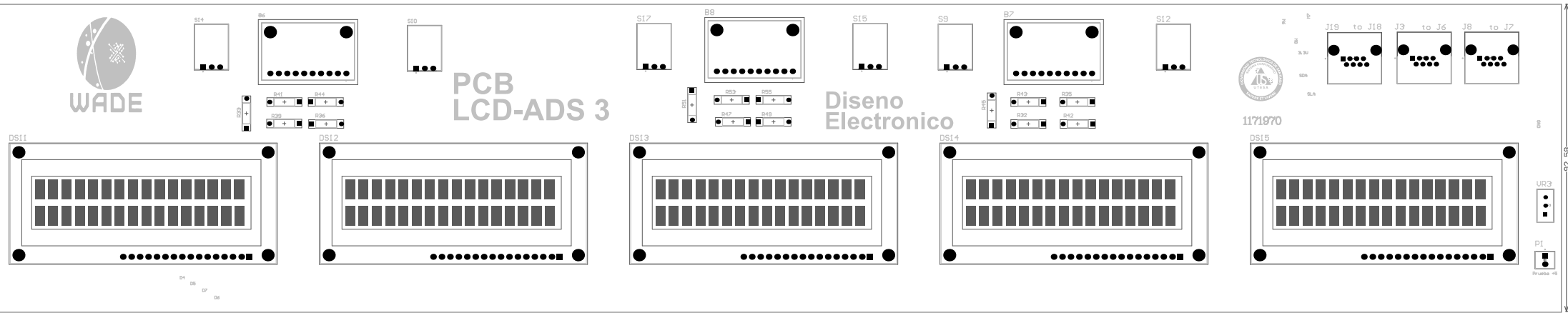


PCB LCD-ADS 3

Diseno Electronico



1171970



470.791 (mm)

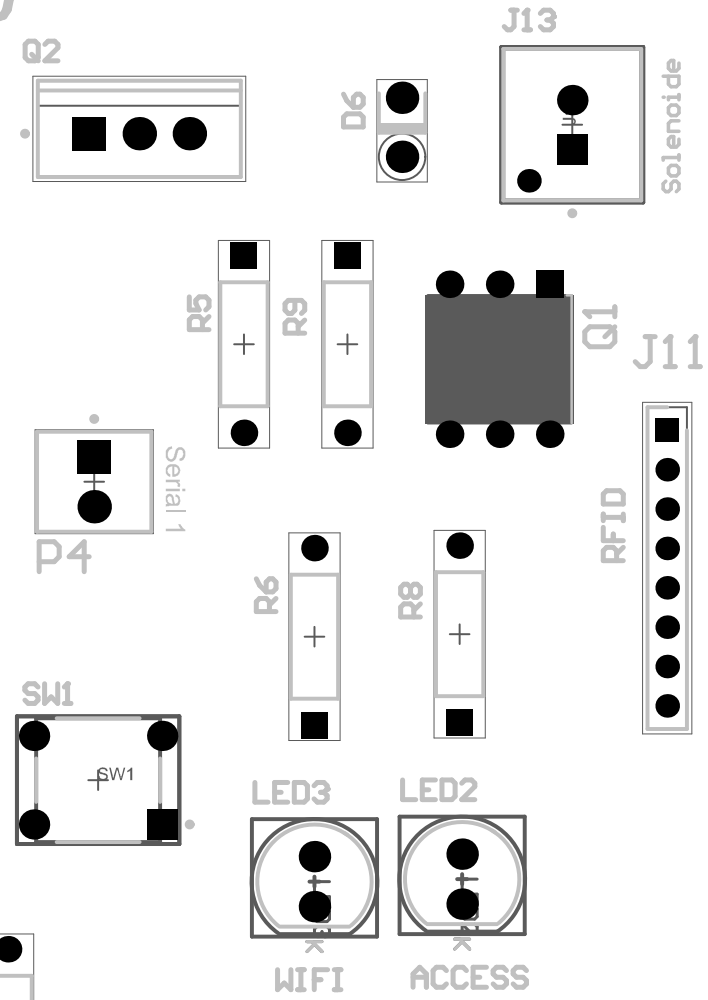
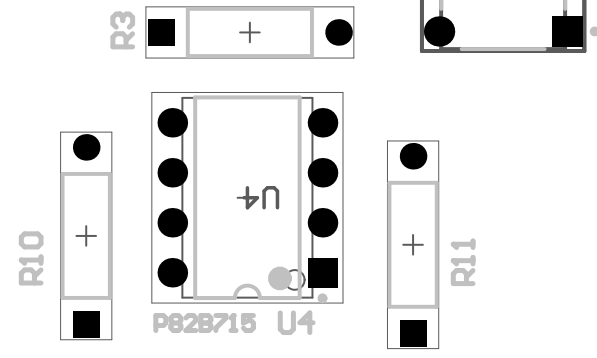
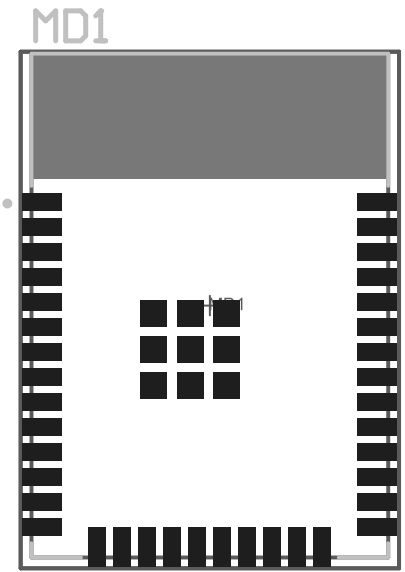
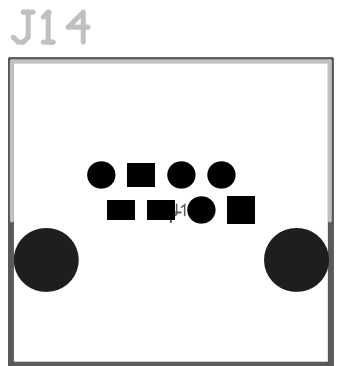
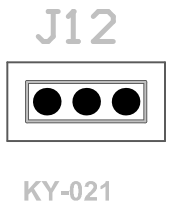
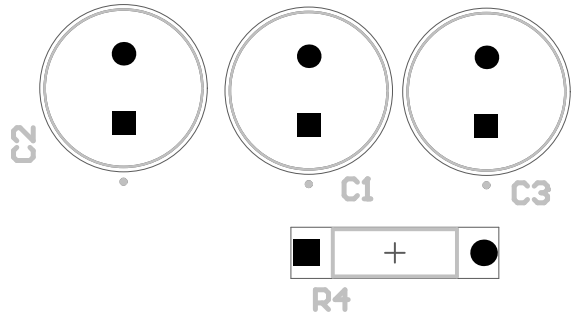
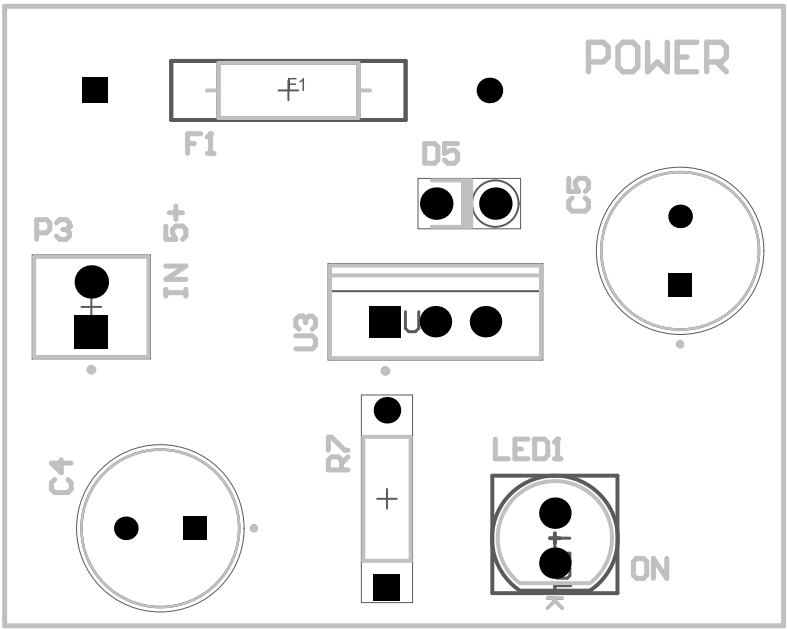
92.56
UR3
PI
Proctor 15



MAIN

1171970

POWER



75.45

100.73