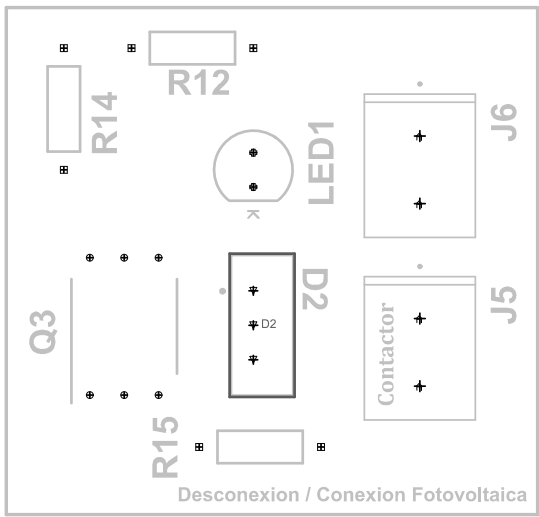
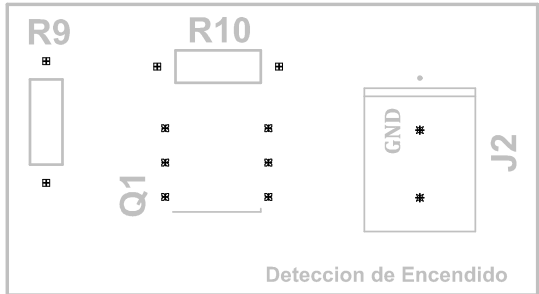
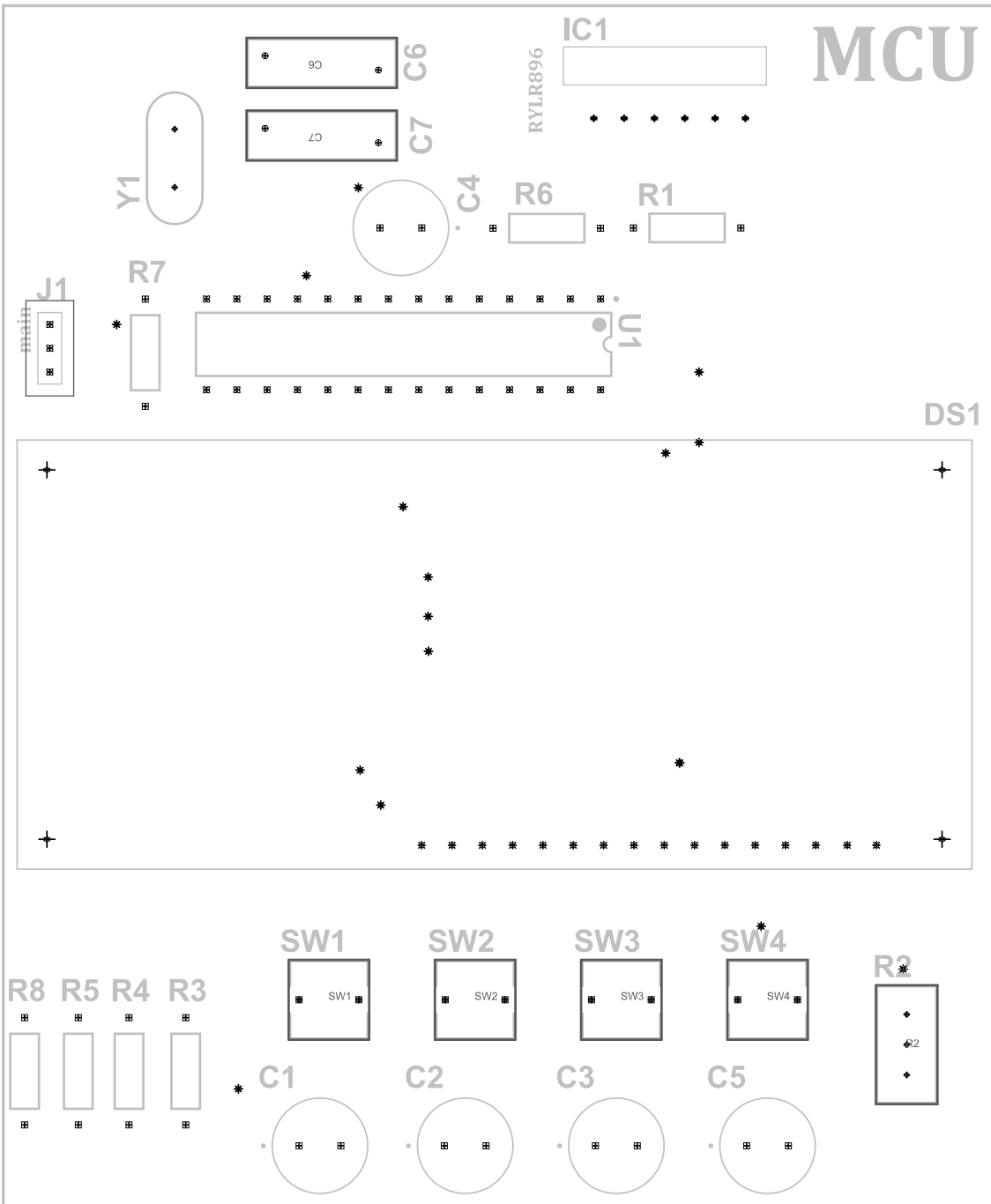
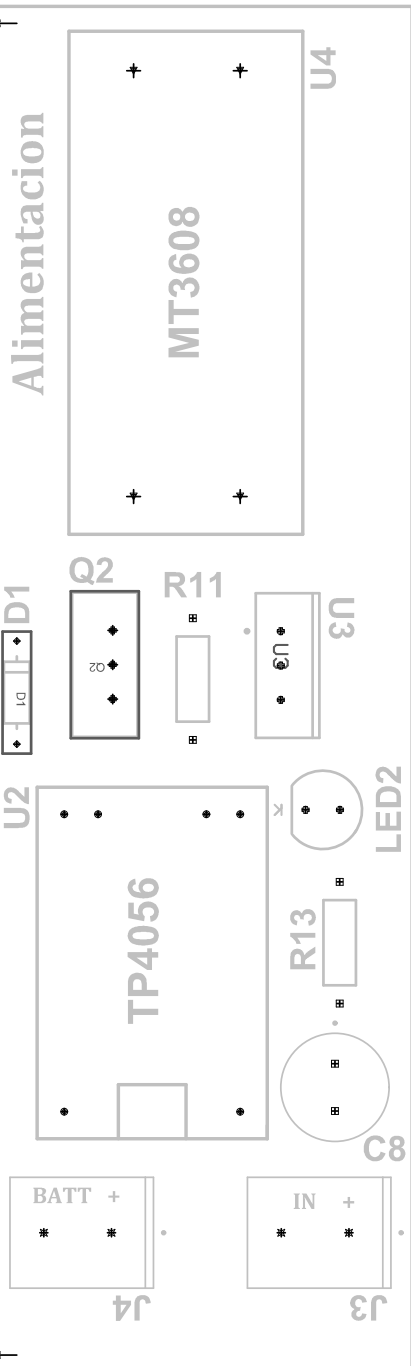


Desconexión/ conexión fotovoltaica

159.9 (mm)

Alimentacion



Sistema Multi-Transfer
Inalambrico para el control
de Inyeccion Fotovoltaica



104 (mm)

Comment	Description	Designator	Footprint	LibRef	Quantity
EEUJK1V391L	AL LYTIC, RADIAL, 35VDC, 390UF	C1, C2, C3, C4, C5, C8	CAPPRD350W60D800 H2000	capacitor 35v THC-1	6
562R5GAS10	CAP CER 10000PF 1KV Z5U RADIAL	C6, C7	FP-562R5GAS10-MFG	CMP-02417-000061-1	2
1N4148	DIODE GEN PURP 100V 200MA DO35	D1	FP-017AG-MFG	CMP-07163-000046-1	1
BTA24-600BWRG	TRIAC ALTERNISTOR 600V TO220AB	D2	FP-TO-220AB-MFG	CMP-12193-000008-1	1
LCM-S01602DTR/A	Character LCD Display Module Reflective 5x8 Dots TN - Twisted Nematic Without Backlight Parallel 80.00mm x 36.00mm x 8.80mm	DS1	LCD_LCM-S01602DTR/A	CMP-013-000000-1	1
REYAX_RYL896	Headers & Wire Housings 3P, 2MM, BRK HDR, SRVT, 2.8, 0.1AU, TB	IC1	REYAXRYLR896	CMP-046-000000-1	1
2355045-3	Headers & Wire Housings 3P, 2MM, BRK HDR, SRVT, 2.8, 0.1AU, TB	J1	23550453	CMP-032-000000-1	1
Generador	Connector, Terminal Block: Wire Receptacle: 2 Pos.: 16 30 AWG; 0.197 in. CL: Sid	J2	TE_282836-2	282836-2	1
ENTRADA	Connector, Terminal Block: Wire Receptacle: 2 Pos.: 16 30 AWG; 0.197 in. CL: Sid	J3	TE_282836-2	282836-2	1
BATTERY	Connector, Terminal Block: Wire Receptacle: 2 Pos.: 16 30 AWG; 0.197 in. CL: Sid	J4	TE_282836-2	282836-2	1
ContactoIN	Connector, Terminal Block: Wire Receptacle: 2 Pos.: 16 30 AWG; 0.197 in. CL: Sid	J5	TE_282836-2	282836-2	1
Alimentación Contactor	Connector, Terminal Block: Wire Receptacle: 2 Pos.: 16 30 AWG; 0.197 in. CL: Sid	J6	TE_282836-2	282836-2	1
151051VS04000	THT LED round monocular color lens, WL-TMRW, Bright Green	LED1, LED2	Type 5mm	CMP-1488-00007-1	2
4N35	Optoisolator Transistor with Base Output 5000Vrms 1 Channel 6-DIP	Q1	DIP6-2.54-7.3X6.5MM	CMP-024-000000-1	1
IRF9540NLPBF	MOSFET P-CH 100V 23A TO262-3	Q2	FP-PG-TO262-3-MFG	CMP-32901-000518-1	1
MOC3021M	Triac	Q3	DIP1016W60P254L730 H450Q6N	MOC3021M	1
MFR-25FBF52-100K	Axial Resistor, 100 KOhm, +/- 1%, 0.25 W, -55 to 155 degC, 2-Pin THD, RoHS, Bulk	R1, R3, R4, R5, R6, R7, R8, R9, R10, R11, R12, R13, R14, R15	RESA60-630X240	CMP-1659-00073-1	14
3296W-1-501LF	TRIMMER 500 OHM 0.5W PC PIN TOP	R2	FP-3296W-MFG	CMP-07234-000046-1	1
FSM4JRT	SWITCH TACTILE SPST-NO 0.05A 24V	SW1, SW2, SW3, SW4	FP-FSM4JRT-MFG	CMP-03407-000038-1	4
ATMEGA328P-PU	8-Bit Microcontroller with 32 KBytes In-System Programmable Flash, 23 I/Os, -40 to 85 degC, 28-Pin PDIP (28P3), RoHS, Tube	U1	ATML-28P3	CMP-020-00004-3	1
TP4056 Lithium Battery Charger Module		U2	BATTMODULE	CMP-051-000000-1	1
LM1117T-3.3/NOPB	800mA Low-Dropout Linear Regulator, 3-pin TO-220, Pb-Free	U3	NDE0003A	CMP-0062-02494-3	1
MT3608	Boost Converter	U4	PCBComponent_1	MT3608	1
49S/18PF	Crystal, 16 MHz, +/-20 ppm, 18 pF, -20 to 70 degC, 2-Pin THD, RoHS	Y1	JPY-49S-18PF	CMP-003-00000-2	1

182.5 (mm)

Alimentación

MT3608

U2

D1

Q2

R11

LED2

TP4056

R13

J4

J3

R8

R5

R4

R3

SW1

SW2

SW3

SW4

C1

C2

C3

C5

R7

Y1

C6

C7

C4

R6

R1

IC1

RYLR896

DS1

R2

R9

Q1

R10

J2

Deteccion de Encendido

R14

R12

LED1

J6

J5

Q3

ZD

D2

R15

Desconexion / Conexion Fotovoltaica

MCU

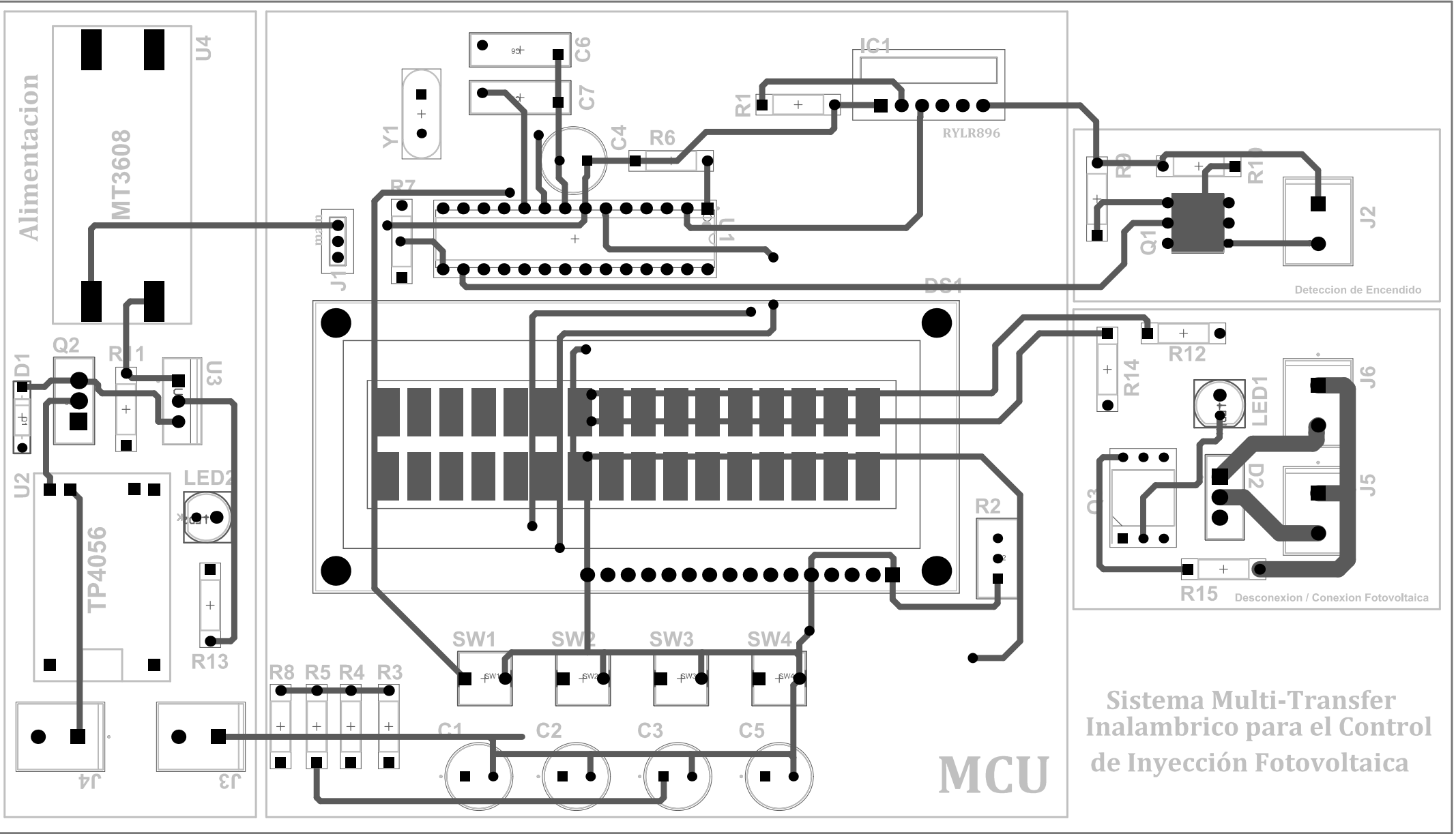
Sistema Multi-Transfer Inalambrico para el Control de Inyección Fotovoltaica

104 (mm)

182.5 (mm)

104 (mm)

Alimentación



MCU

Deteccion de Encendido

R15 Desconexion / Conexion Fotovoltaica

Sistema Multi-Transfer Inalambrico para el Control de Inyección Fotovoltaica